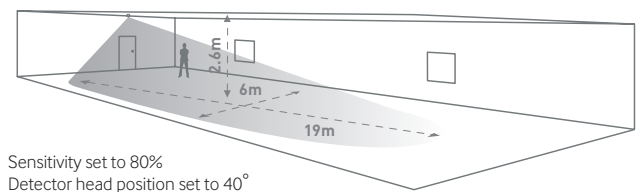
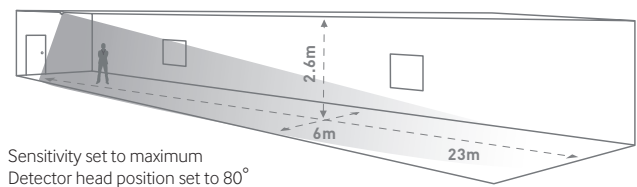
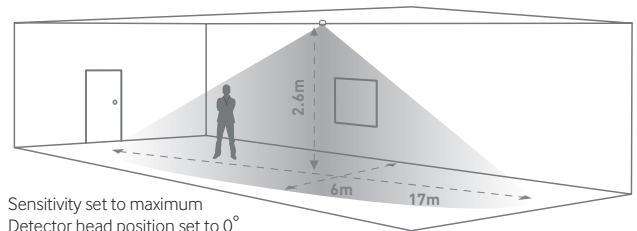


# MWS3A | Adjustable head, flush mounted, ceiling, microwave presence/absence detectors



## Detection pattern

high < sensitivity > low



Unlike fixed head microwave detectors the MWS3A offers a unique presence/absence detection capability by using an adjustable head.

### Key Product Features:

- Unique adjustable head design to achieve the required detection pattern
- Locking mechanism to prevent tampering
- Can be flush or surface mounted
- IP40 rated.

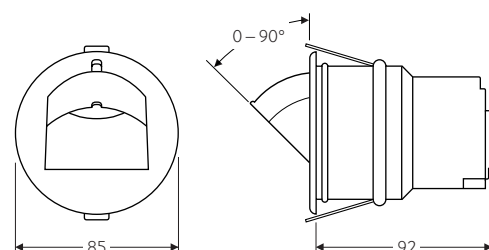
### Available control methods

- PRM – Switching
- DD – DALI/DSI dimming
- AD – Analogue dimming
- KNX

### Available options


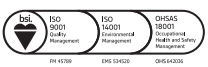
- LV – Low voltage
- VFC – Voltage free contact
- 2CH – 2 channel
- 2CH-NC – 2 channel normally closed for fail safe applications

### Dimensions (mm)



## Technical Data

Part Code	MWS3A-PRM	MWS3A-DD	MWS3A-AD
<b>Control method</b>	PRM Switching	DALI/DSI Digital Dimming	1–10V Analogue Dimming
<b>IP rating</b>	40	40	40
<b>Device/ballast control</b>	–	up to 20 drivers/ballasts	up to 10 drivers/ballasts
<b>Weight (kg)</b>	0.15	0.15	0.15
<b>Supply voltage (AC)</b>	230 VAC +/- 10%	230 VAC +/- 10%	230 VAC +/- 10%
<b>Supply frequency (Hz)</b>	–	–	50
<b>Power consumption parasitic (mW)</b>	910mW	961mW	959mW
<b>Terminal capacity</b>	2.5mm <sup>2</sup>	2.5mm <sup>2</sup>	2.5mm <sup>2</sup>
<b>Maximum loads</b>			
Incandescent lighting (INC)	10A	10A	10A
Fluorescent lighting (F)	10A	10A	10A
Compact fluorescent lighting (CF)	10A	10A	10A
LED lighting (LED)	10A	10A	10A
Resistive heaters (RH)	10A	10A	10A
Fans & ventilation equipment (F&V)	10A	10A	10A
<b>Working temperature range (°C)</b>	-10 to 50	-10 to 50	-10 to 50
<b>Humidity</b>	5 to 95% non-condensing	5 to 95% non-condensing	5 to 95% non-condensing
<b>Material (casing)</b>	Flame retardant ABS and PC/ABS	Flame retardant ABS and PC/ABS	Flame retardant ABS and PC/ABS
<b>Insulation class</b>	Class 2	Class 2	Class 2
<b>Compliance</b>	EMC-2014/30/EU, LVD-2014/35/EU	EMC-2014/30/EU, LVD-2014/35/EU	EMC-2014/30/EU, LVD-2014/35/EU
<b>Time out range</b>	10s–99m	10s–99m	10s–99m
<b>Cutout diameter</b>	74mm	74mm	74mm
<b>Purpose</b>	Sensing control	Sensing control	Sensing control
<b>Installation</b>	Independent flush mounted, electronic control	Independent flush mounted, electronic control	Independent flush mounted, electronic control

	<p>CP Electronics A Business unit of Legrand Electric Limited, Brent Crescent, London NW10 7XR, UK t. +44 (0)333 900 0671 info@cpelectronics.co.uk</p>	<p><b>Important notice:</b> This device should be installed by a qualified electrician in accordance with the latest edition of the IEE Wiring Regulations and the applicable Building Regulations. Due to our policy of continual product improvement CP Electronics reserves the right to alter the specification of this product without prior notice.</p>	
	<p>www.cpelectronics.co.uk</p>		